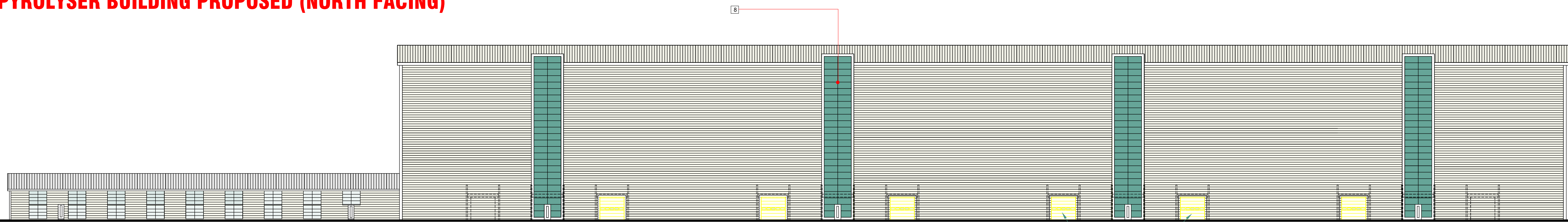
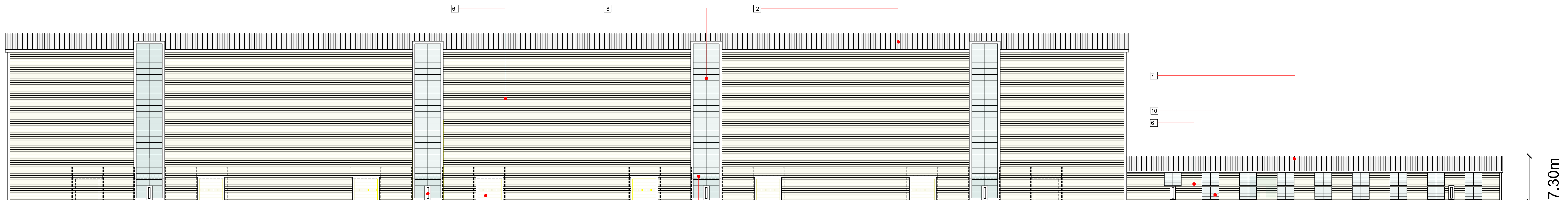


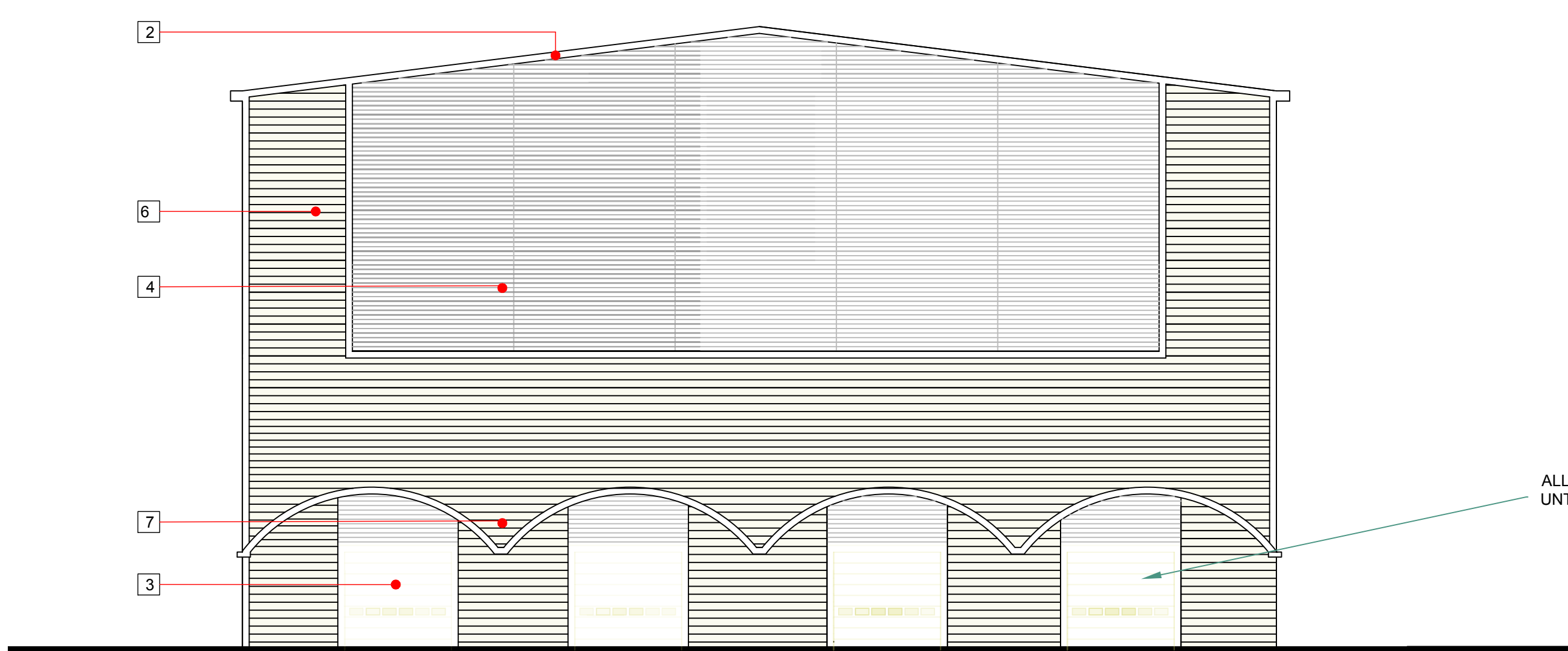
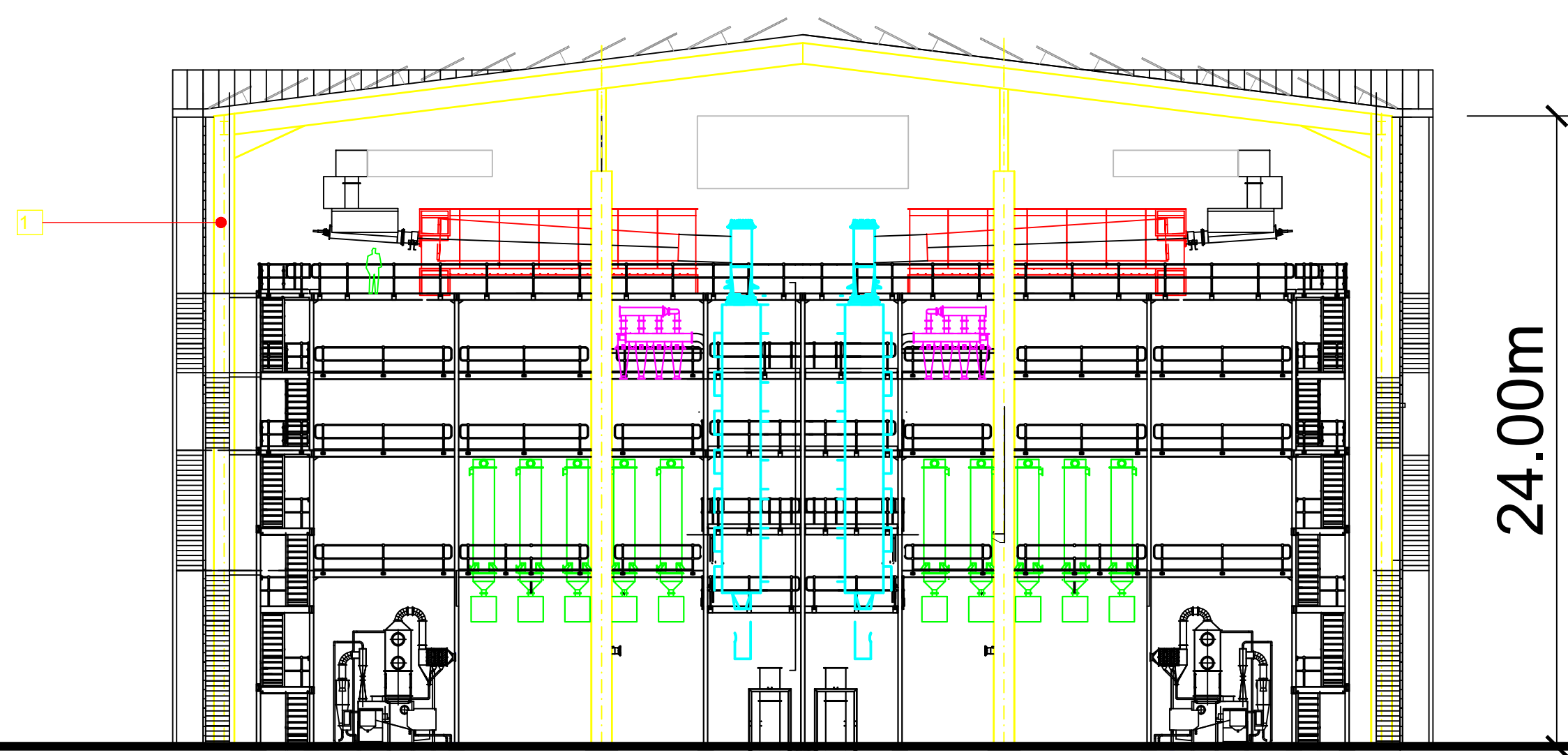
**PYROLYSER BUILDING PROPOSED (NORTH FACING)**



**PYROLYSER BUILDING PROPOSED (SOUTH FACING)**

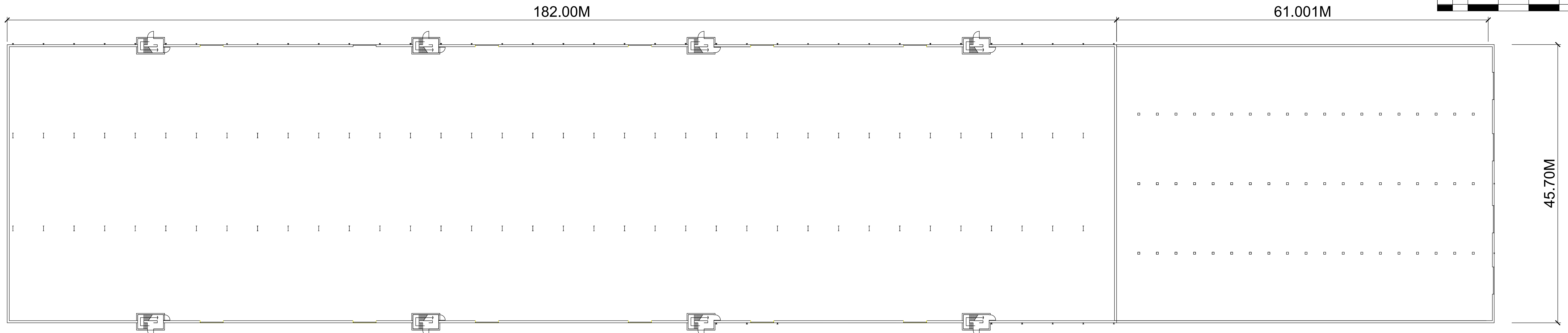
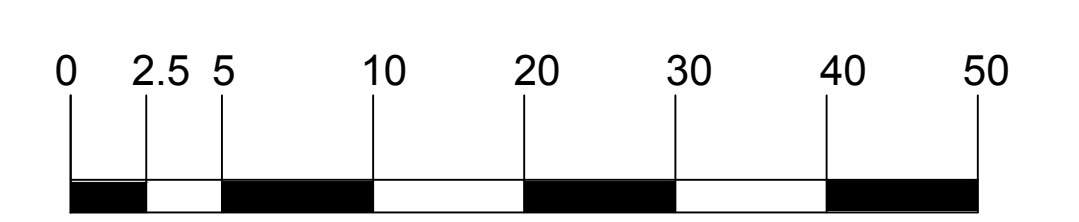


- KEY:
1. PORTAL FRAME TO STRUCTURAL ENGINEERS DETAILS
  2. COMPOSITE PANEL FULLY INSULATED ROOF SYSTEM KINGSPAN OR SIMILAR SUPPORTED BY STRUCTURAL PURLINS
  3. HORIZONTAL PANEL UP AND OVER DOORS BY CRAWFORD OR SIMILAR
  4. STEEL LOUVRE SYSTEM WITH INSULATED BLANKING PANELS
  5. STEEL FACED ESCAPE DOORS
  6. 300MM COMPOSITE STEEL FACED WALL PANEL HORIZONTALLY LAID. PANEL SYSTEM BY KINGSPAN OR SIMILAR
  7. EXISTING CONCRETE BARREL VAULTED ROOF RE-CLAD IN PROFILED CURVED METAL SHEETING TO SUIT
  8. MEANS OF ESCAPE STAIR TOWER COMPRISED OF 300MM COMPOSITE STEEL FACED WALL PANELS HORIZONTALLY LAID. PANEL SYSTEM BY KINGSPAN OR SIMILAR - NO WIDNWS
  9. DOTTED LINE INDICATES WHERE EXISTING OPENS OCCUR IN CONC WALL
  10. INSULATED PANEL (TRESPA OR SIMILAR)
- NOTE - THE BUILDING WILL NOT FEATURE ANY WINDOWS OR GLAZED UNITS. EXISTING WINDOWS WILL BE COVERED WHEN THE BUILDING IS RE-CLAD.



**SECTION THROUGH MAIN HALL**

**GABLE ELEVATION SHOWING END ELEVATION OF GRINDING HALL**



**PYROLYSER (1) AND GRINDING HALL (3) BUILDING PROPOSED PLAN**

This drawing is copyright ©  
NOTE: All dimensions to be checked on site and not scaled from the drawing.