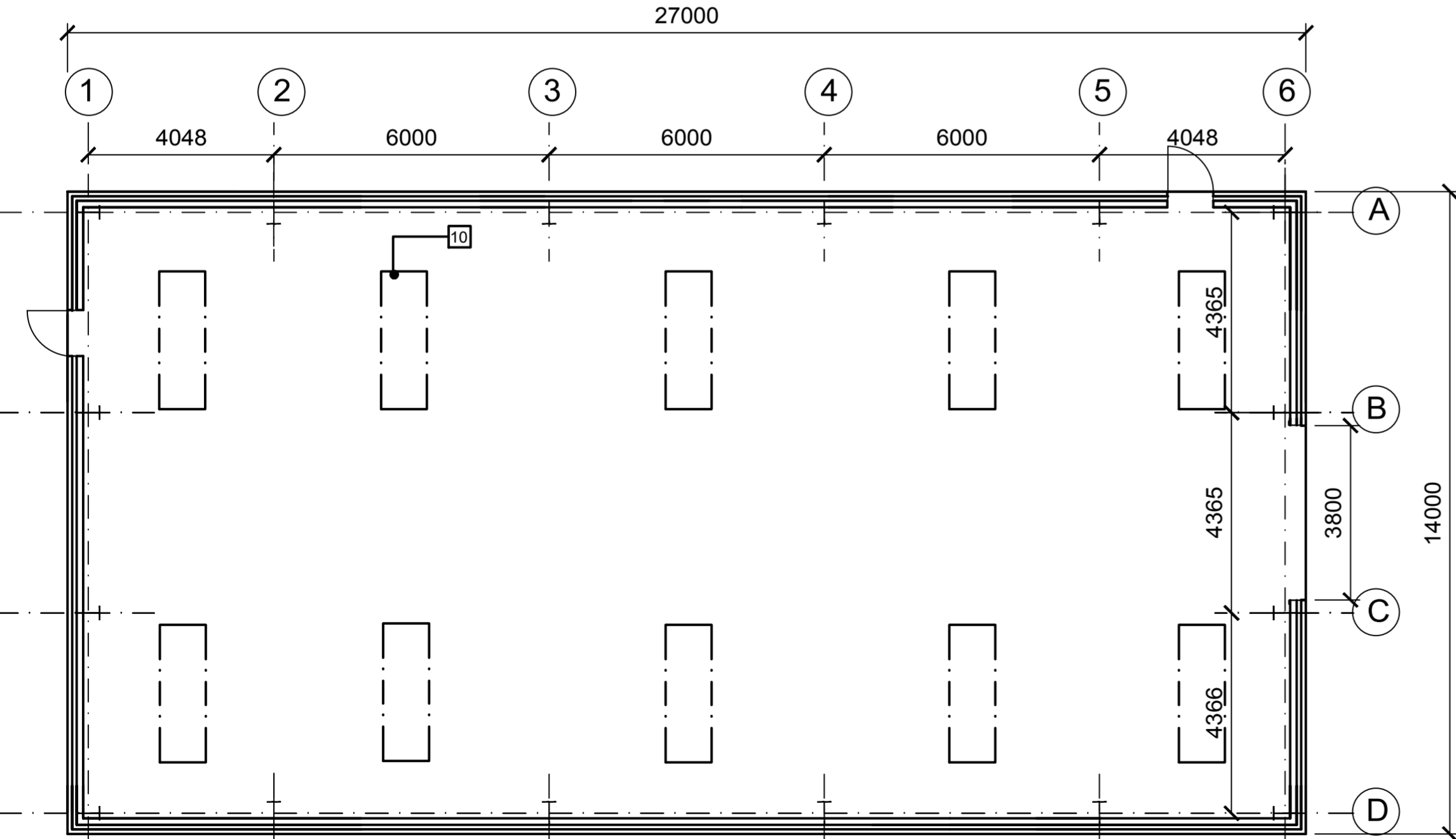


NORTH FACING ELEVATION (1:100)

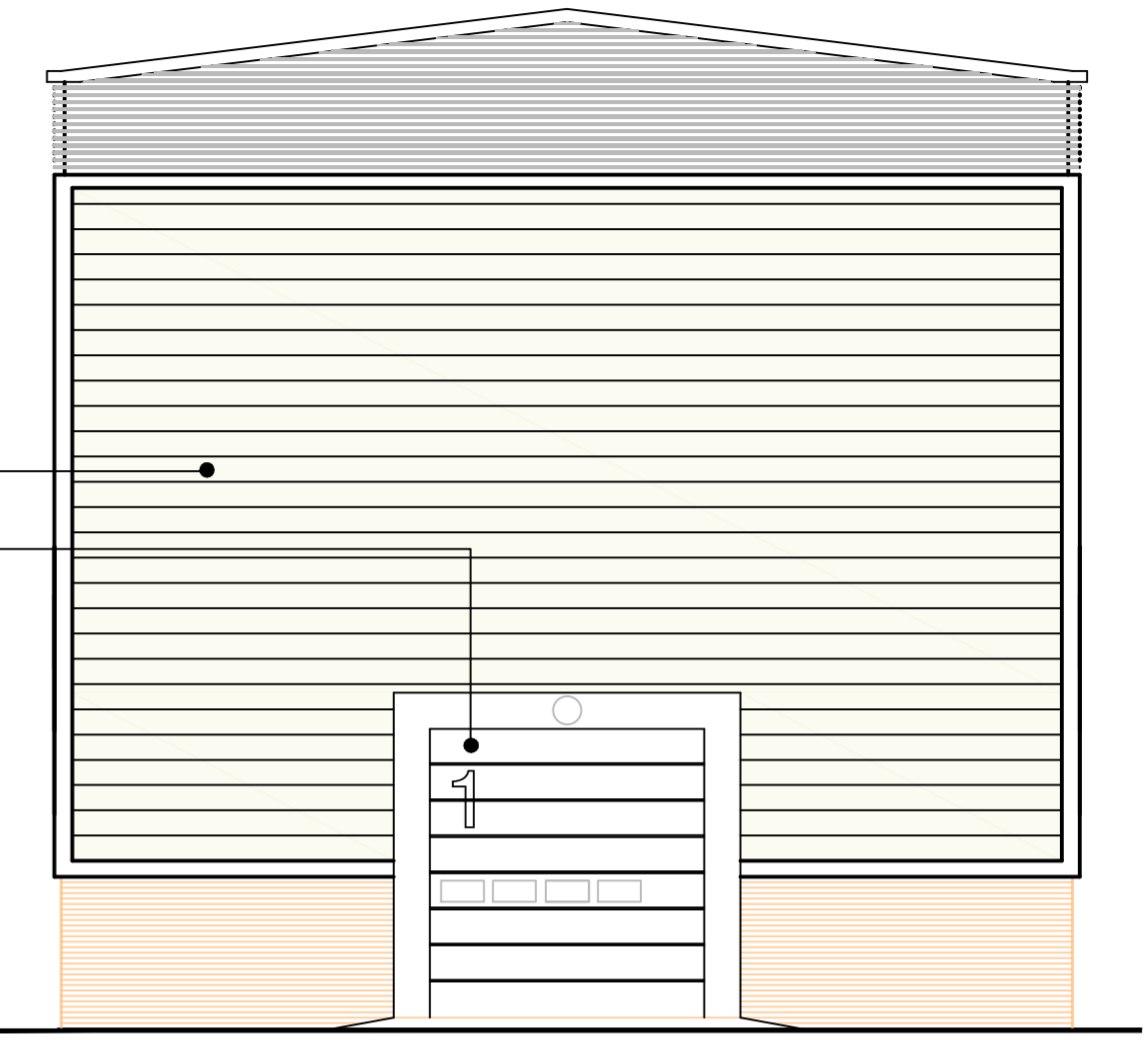


PLAN OF MV BUILDING (1:100)

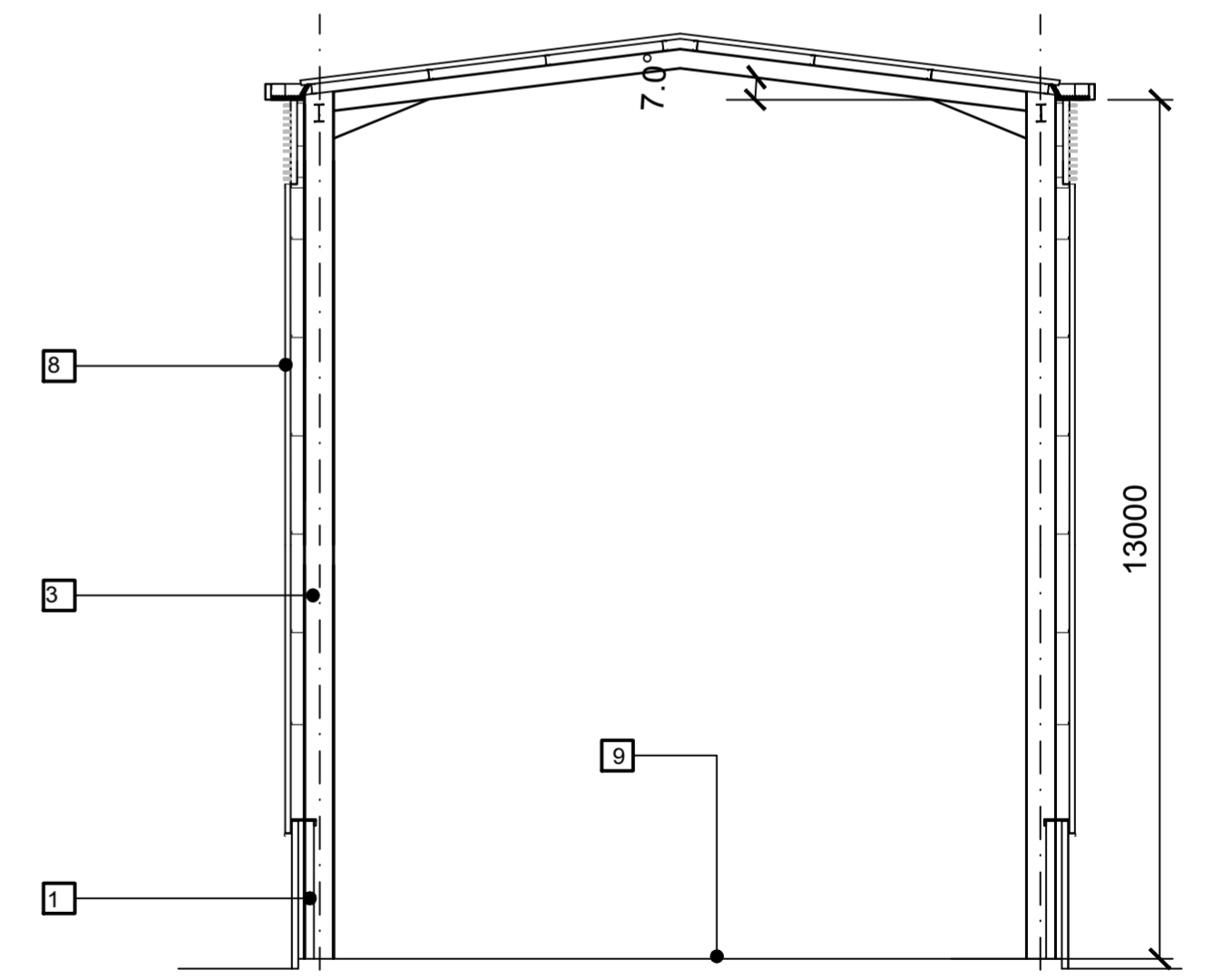


KEY:

1. 140MM CONCRETE BLOCK INNER SKIN UP TO 2100 AFFL
2. 102MM OUTER SKIN OF FACE BRICKWORK
3. PORTAL FRAME TO STRUCTURAL ENGINEERS DETAILS
4. COMPOSITE PANEL FULLY INSULATED ROOF SYSTEM KINGSPAN OR SIMILAR SUPPORTED BY STRUCTURAL PURLINS
5. HORIZONTAL PANEL UP AND OVER DOORS BY CRAWFORD OR SIMILAR
6. STEEL LOUVRE SYSTEM WITH INSULATED BLANKING PANELS
7. STEEL FACED ESCAPE DOORS
8. 300MM COMPOSITE STEEL FACED WALL PANEL HORIZONTALLY LAID. PANEL SYSTEM BY KINGSPAN OR SIMILAR
9. POWER FLOATED CONCRETE SLAB TO ENGINEERS DETAILS
10. FILON FAIRs GRP ROOFLIGHTS TRIPLE SKIN FACTORY ASSEMBLED INSULATED ROOFLIGHTS DESIGNED TO PROVIDE NATURAL LIGHT



EAST FACING GABLE ELEVATION (1:100)



TYPICAL SECTION 1:100

This drawing is copyright ©
NOTE: All dimensions to be checked on site and not scaled from the drawing.

	CLIENT Eggedol UK Ltd.	JOB TITLE Blackbridge Power Station and Eco Park Milford Haven	DRNG TITLE MV Building Plan Section and Elevations
	DATE January 2016	DRAWN ---	CHECKED ---
HUW GRIFFITHS ARCHITECTS LTD PENZAER SIARTREDIG CHARTERED ARCHITECT		SCALE 1:100	DRNG NO. HG-15-07-P14
NORTH HILL, 7 ST. JAMES CRESCENT, SWANSEA, SA1 6DP Tel: 01792 644038 Fax: 01792 645446 Email: design@huwgriffithsarchitects.co.uk		A2	REV ---
			PURPOSE Planning