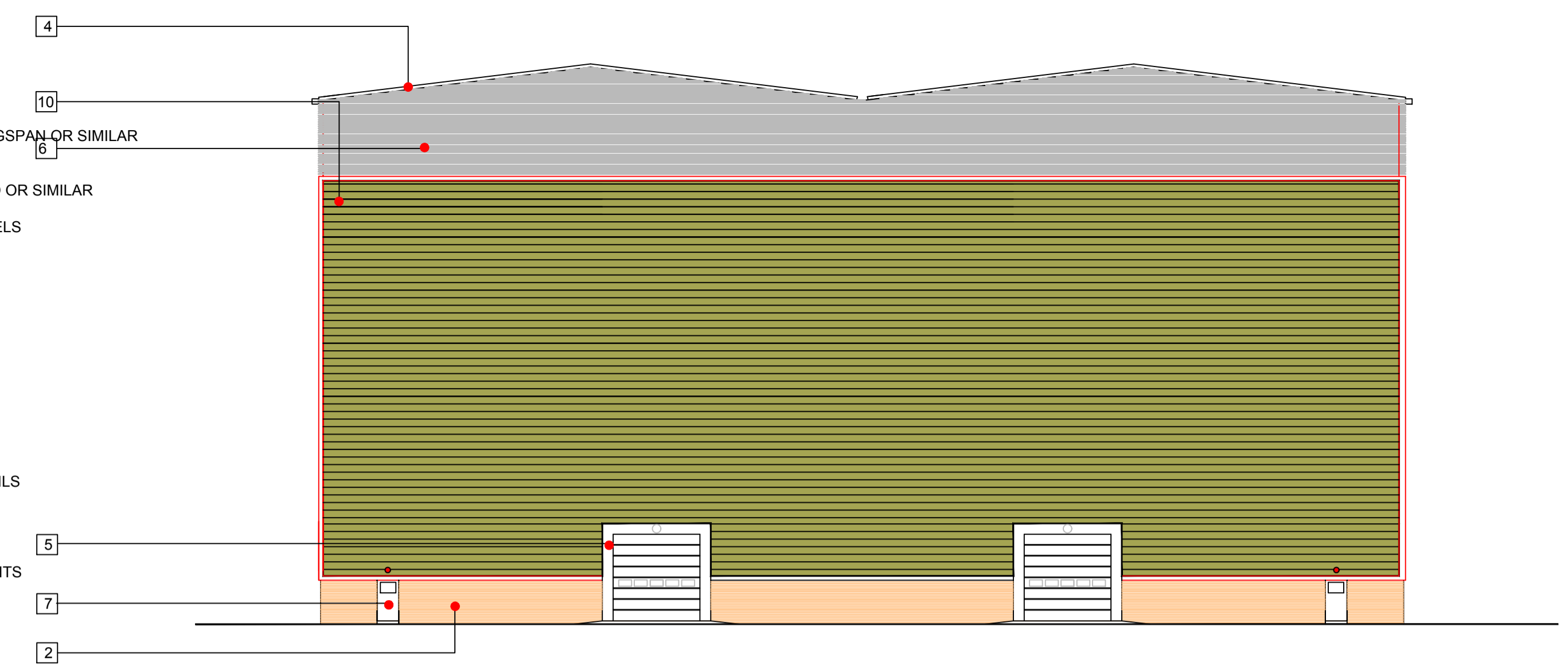


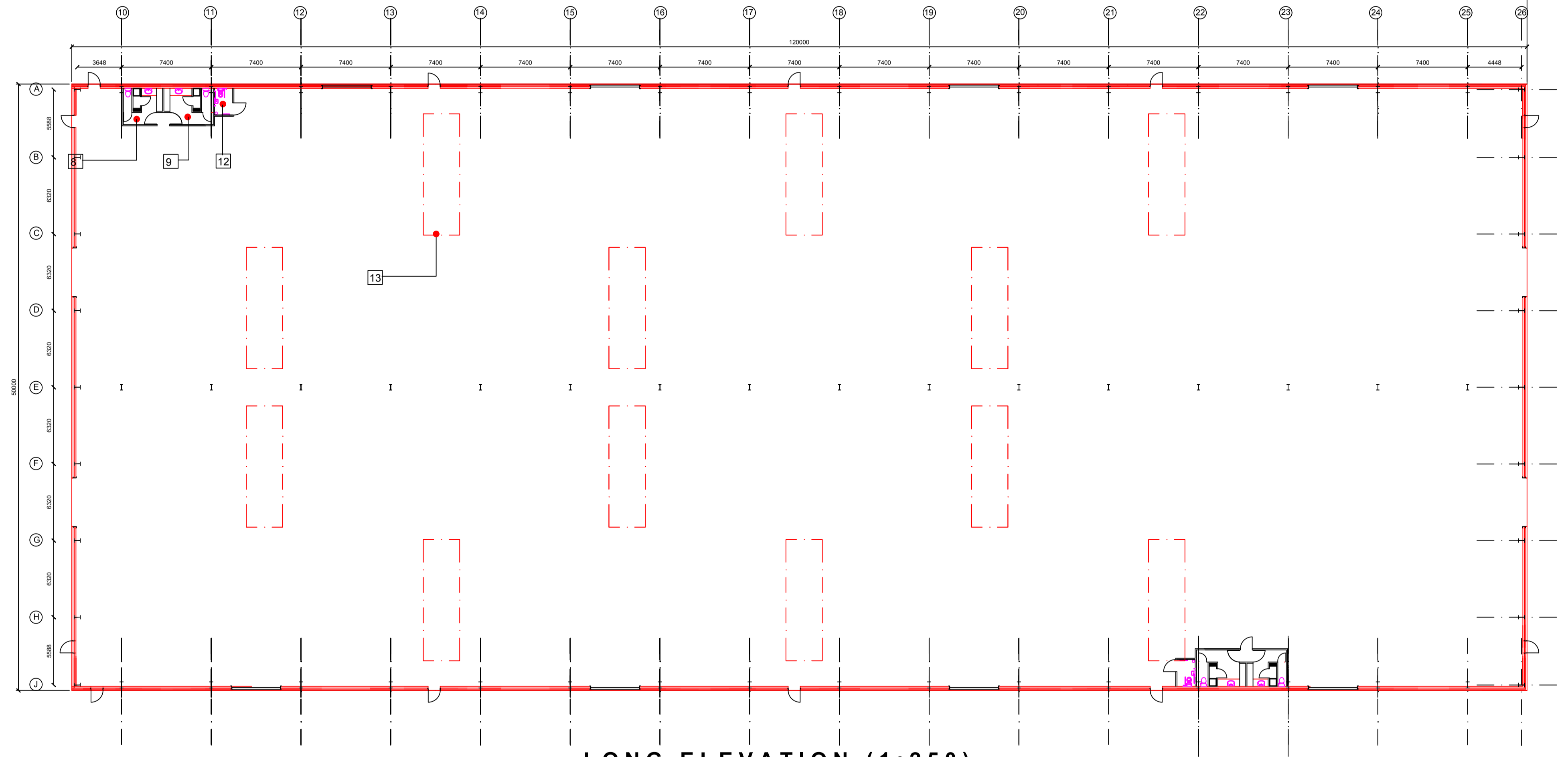
TYPICAL SECTION 1:200

- KEY:
1. 140MM CONCRETE BLOCK INNER SKIN UP TO 2100 AFFL
 2. 102MM OUTER SKIN OF FACE BRICKWORK
 3. PORTAL FRAME TO STRUCTURAL ENGINEERS DETAILS
 4. COMPOSITE PANEL FULLY INSULATED ROOF SYSTEM KINGSPAN OR SIMILAR SUPPORTED BY STRUCTURAL PURLINS
 5. HORIZONTAL PANEL UP AND OVER DOORS BY CRAWFORD OR SIMILAR
 6. STEEL LOUVRE SYSTEM WITH INSULATED BLANKING PANELS
 7. STEEL FACED ESCAPE DOORS
 8. MALE FACILITIES (SHOWER, WC AND CHANGING) FORMED IN 100MM METAL STUDWORK 2600MM AFFL
 9. FEMALE FACILITIES (SHOWER, WC AND CHANGING) FORMED IN 100MM METAL STUDWORK 2600MM AFFL
 10. 300MM COMPOSITE STEEL FACED WALL PANEL HORIZONTALLY LAID. PANEL SYSTEM BY KINGSPAN OR SIMILAR
 11. POWER FLOATED CONCRETE SLAB TO ENGINEERS DETAILS
 12. DISABLED WC
 13. FILON FAIRs GRP ROOFLIGHTS TRIPLE SKIN FACTORY ASSEMBLED INSULATED ROOFLIGHTS DESIGNED TO PROVIDE NATURAL LIGHT

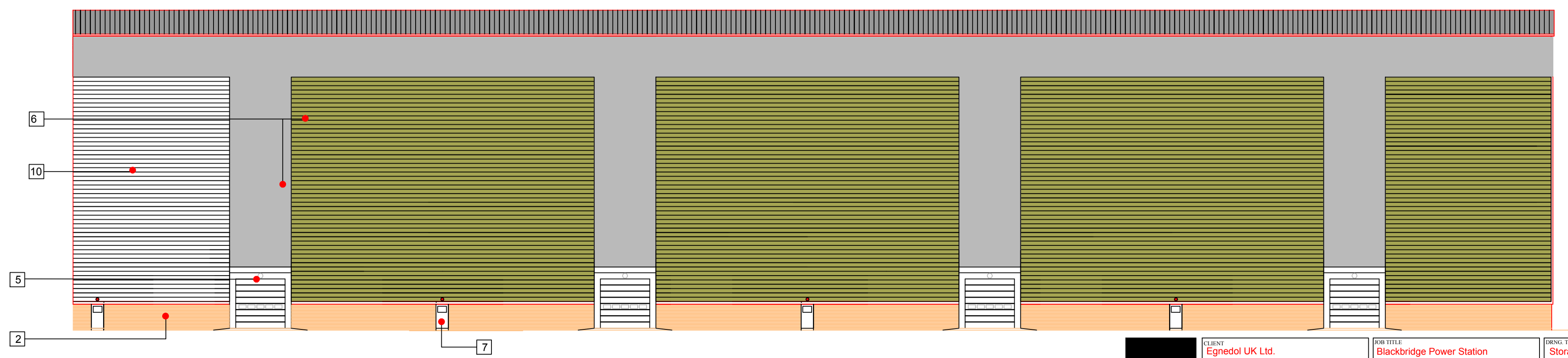


TYPICAL GABLE ELEVATIONS 1:200

PLAN OF STORAGE BUILDING (1:250)



LONG ELEVATION (1:250)



This drawing is copyright ©
NOTE: All dimensions to be checked on site and not scaled from the drawing.

<p>HUW GRIFFITHS ARCHITECTS LTD FENSAS ARCHITECTS CHARTERED ARCHITECT</p>	<p>CLIENT Eggedol UK Ltd.</p>	<p>JOB TITLE Blackbridge Power Station and Eco Park Milford Haven</p>	<p>DATE March 2018</p>	<p>DRAWN / CHECKED</p>	<p>SCALE 1:200 / 1:250</p>	<p>PROJECT NO. HG-15-07-P08</p>	<p>REV. / REVISION Planning</p>
	<p>HUW GRIFFITHS ARCHITECTS LTD NORTH HILL, 7 ST. JAMES CRESCENT, SWANSEA, SA1 6DP Tel: 01792 644038 Fax: 01792 645446 Email: design@huwgriffithsarchitects.co.uk</p>			<p>PROJECT NO. HG-15-07-P08</p>	<p>REV. / REVISION Planning</p>		